

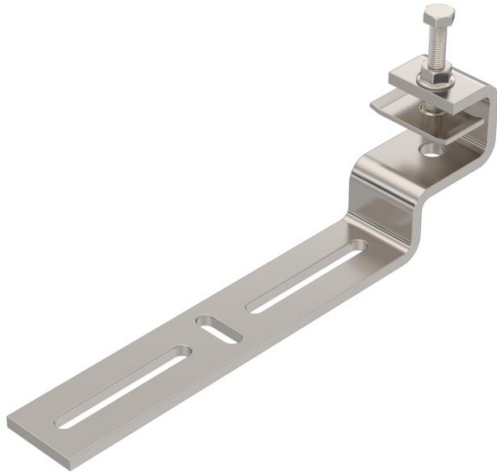
Technical data sheet

Beam clamp, steel beam outer side A2

Item number: 6003972



Beam clamp for mounting light components on the outer side of vertical or horizontal steel beams. Suitable, for example, for mesh cable trays and cable trays to 200 mm width or clips. The cable tray system attached to the beam clamp can be routed both horizontally and vertically.



A2 Stainless steel

2B Bright, treated

Master data

Item number	6003972
Type	BFK V 200 A2
Description 1	Clamping piece
Description 2	for exterior of steel girder
Available from	01.03.2026
Manufacturer	OBO
Dimension	253x74x40
Colour	stainless steel
Material	Stainless steel 1.4301
Surface	Bright, treated
Surface standard	
Smallest sales unit	10
Unit of quantity	Piece
Weight	63.29 kg
Weight unit	kg/100 pc.
CO2 Footprint (GWP) Cradle-to-Gate	3,8577 kg CO2e / 1 Piece

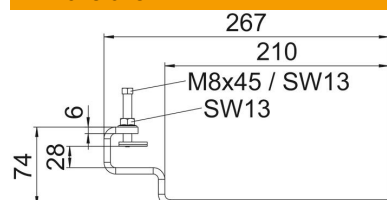
Technical data sheet

Beam clamp, steel beam outer side A2

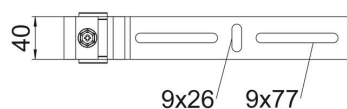
Item number: 6003972



Dimensions



Length	261 mm
Width	210 mm
Height	62 mm



Technical data

Material thickness	6 mm
Rustproof steel, pickled	yes
Permitted temperature range, max.	120 °C
Permitted temperature range, min.	-20 °C