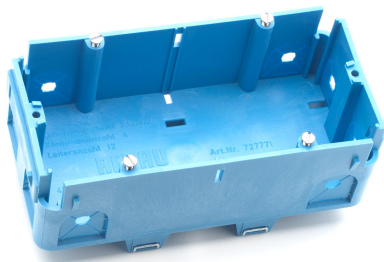


Technical data sheet

Accessory mounting box BRK GD 2, double

Item number: 6133585



Double SIGNO device installation socket for the connection of power and data technology in the SIGNO BK, BA and BS trunking systems.
Toolless mounting through fixing with an eccentric rotational lock and time-saving cable connection.



PP Polypropylene

Master data

Item number	6133585
Type	BRK GD2
Description 1	Accessory mounting box
Description 2	SIGNO double blue
Manufacturer	OBO
Dimension	60x70x142
Colour	Light blue; RAL 5012
Material	Polypropylene
Smallest sales unit	5
Unit of quantity	Piece
Weight	6.6 kg
Weight unit	kg/100 pc.
CO2 Footprint (GWP) Cradle-to-Gate	0,3648 kg CO2e / 1 Piece

Dimensions

Length	142 mm
Width	70 mm
Height	60 mm

Technical data sheet

Accessory mounting box BRK GD 2, double

Item number: 6133585



Technical data

Number of units	2
Version for	Closed
Fastening track	Other
Halogen-free	yes
With connection compartment	yes
Box mounting type	Rear wall
Accessory mounting type	Bolts
Strain relief option	yes