

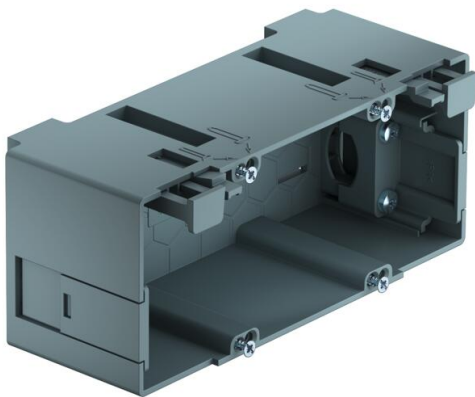
# Technical data sheet

## Accessory mounting box BRK GD2CEE, double

Item number: 6133579



Double SIGNA accessory mounting box for the connection of power and data technology in the trunking systems Signa Base/Signa Style.  
Toolless mounting through a fastening lock and time-saving cable connection.



PA Polyamide

### Master data

Item number	6133579
Type	BRK GD 2CEE gr
Description 1	Accessory mounting box
Description 2	SIGNA CEE double
Manufacturer	OBO
Dimension	66x68x160
Colour	Blue grey; RAL 7031
Material	Polyamide
Smallest sales unit	4
Unit of quantity	Piece
Weight	14.8 kg
Weight unit	kg/100 pc.
CO2 Footprint (GWP) Cradle-to-Gate	0,731 kg CO2e / 1 Piece

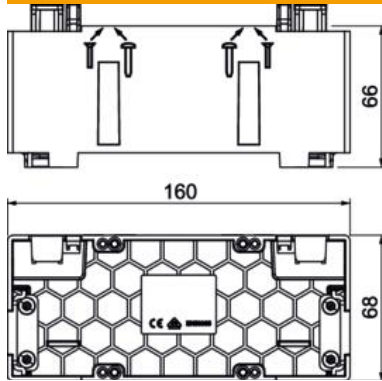
# Technical data sheet

## Accessory mounting box BRK GD2CEE, double

Item number: 6133579



### Dimensions



Length	160 mm
Width	68 mm
Height	66 mm

### Technical data

Number of units	2
Version for	Closed
Fastening track	Other
Halogen-free	yes
With connection compartment	yes
Box mounting type	Rear wall
Accessory mounting type	Bolts
Strain relief option	yes