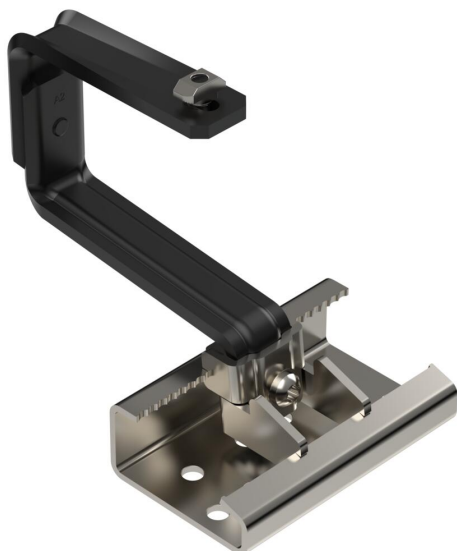


# Technical data sheet

## Roof hook for PV module mounting, screwable profile, tiled roof, black

Item number: 5901406



Roof hook to mount photovoltaic modules on pitched roofs in combination with the TP 45 support profile. Suitable for tiled roofs. Screwable fastening on the support profile. Mounting on rafters with TKS wafer-head screws. The roof hook can be adjusted horizontally as well as vertically continuously via glands, correct-Torx 40 key. Height adjustment in the range of the roof slat between 40–54 mm, side adjustment option up to 76 mm, height adjustment of the support profile up to 18 mm. Black version.



**A2** Stainless steel

**P** Powder-coated

### Master data

Item number	5901406
Type	DHU T A2K S
Description 1	Roof hook, screwable profile
Description 2	for pitched roof system
Manufacturer	OBO
Dimension	120x186x150
Colour	Black
Material	Stainless steel 1.4301
Surface	Powder-coated
Surface standard	
Smallest sales unit	10
Unit of quantity	Piece
Weight	108.5 kg
Weight unit	kg/100 pc.
CO2 Footprint (GWP) Cradle-to-Gate	3,8887 kg CO2e / 1 Piece

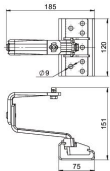
# Technical data sheet

Roof hook for PV module mounting, screwable profile, tiled roof, black

Item number: 5901406



## Dimensions



Width	120 mm
-------	--------

## Technical data

Material thickness	6 mm
With fastening material	no
With mounting plate	yes
Angle of inclination, max.	0 °
Angle of inclination, min.	90 °
Adjustable	yes
Suitable for fastening photovoltaic roof/facade fastening	Pitched roof fastening
Suitable for roof material	Roof tile
Wide fastening plate	75 mm
Fastening plate, length	120 mm
Height-fastening plate	36 mm
Penetration of roof necessary	yes
Alignment	Horizontal/vertical
Anchoring	Bolts