

# Technical data sheet

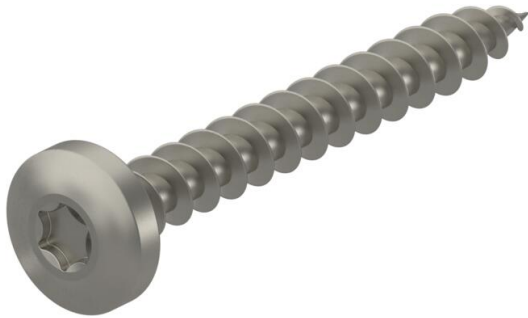
## Chipboard screw, with Torx, panhead, stainless steel

Item number: 3191012



Stainless steel wood screw with lens head and Torx drive for fastenings in interior and exterior areas.

Areas of use: Wood, chipboard, plasterboard panels and plastic anchors.



**A4** Stainless steel

**2B** Bright, treated

### Master data

Item number	3191012
Type	OTSP 4,0x50 A4
Description 1	Chipboard screw
Description 2	panhead, TX 20 drive
Manufacturer	OBO
Dimension	4x50mm
Material	Stainless steel
Surface	Bright, treated
Surface standard	
Smallest sales unit	100
Unit of quantity	Piece
Weight	0.325 kg
Weight unit	kg/100 pc.

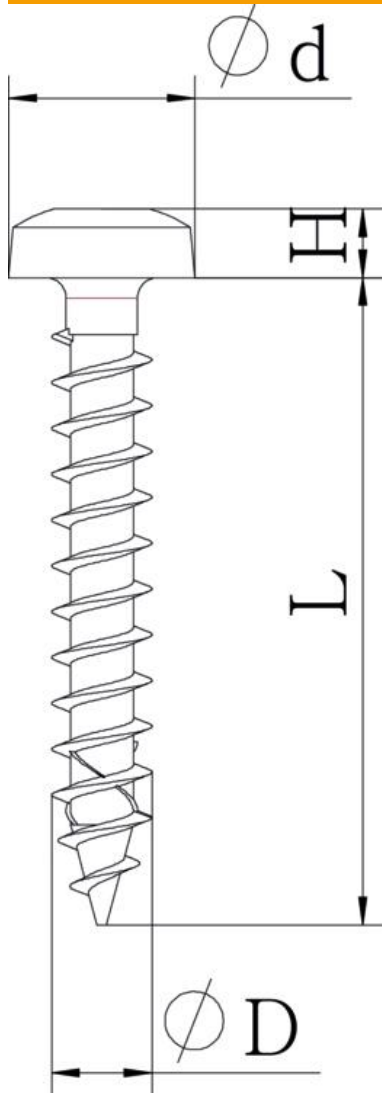
# Technical data sheet

Chipboard screw, with Torx, panhead, stainless steel

Item number: 3191012



## Dimensions



Length	50 mm
Dimension D	4 mm
Dimension L	50 mm

## Technical data

Drive size	TX 20
Hardened	no
Head diameter	8 mm
Head shape	Panhead
Screw system	Torx
Two-compartment	no