

Technical data sheet

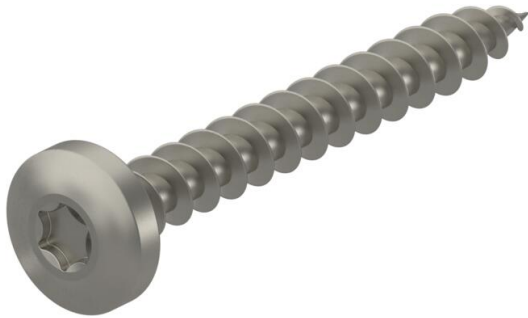
Chipboard screw, with Torx, panhead, stainless steel

Item number: 3191032



Stainless steel wood screw with lens head and Torx drive for fastenings in interior and exterior areas.

Areas of use: Wood, chipboard, plasterboard panels and plastic anchors.



A4 Stainless steel

2B Bright, treated

Master data

| | |
|---------------------|----------------------|
| Item number | 3191032 |
| Type | OTSP 6,0x40 A4 |
| Description 1 | Chipboard screw |
| Description 2 | panhead, TX 25 drive |
| Manufacturer | OBO |
| Dimension | 6x40mm |
| Material | Stainless steel |
| Surface | Bright, treated |
| Surface standard | |
| Smallest sales unit | 100 |
| Unit of quantity | Piece |
| Weight | 0.72 kg |
| Weight unit | kg/100 pc. |

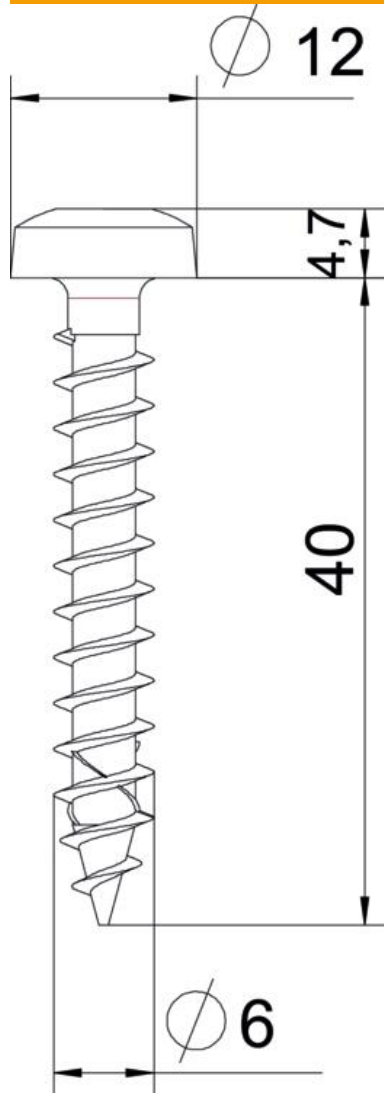
Technical data sheet

Chipboard screw, with Torx, panhead, stainless steel

Item number: 3191032



Dimensions



| | |
|-------------|-------|
| Length | 40 mm |
| Dimension D | 6 mm |
| Dimension L | 40 mm |

Technical data

| | |
|-----------------|---------|
| Drive size | TX 25 |
| Hardened | no |
| Head diameter | 12 mm |
| Head shape | Panhead |
| Screw system | Torx |
| Two-compartment | no |