

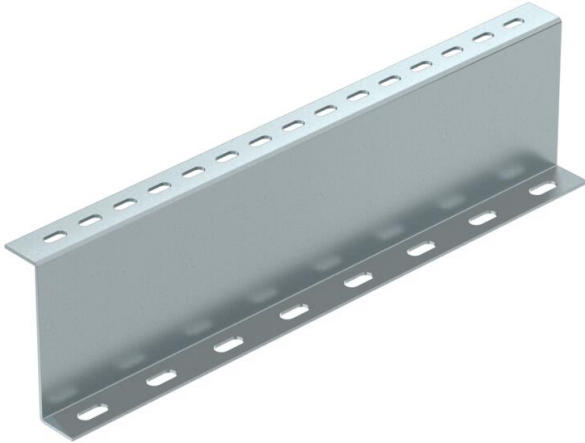
# Technical data sheet

## Support profile 100 FS

Item number: 6044591



Support profile for holding up the walkable cable tray system BKRS from the floor. Installation must be performed on both sides of the Z profile during the process of securing the system so that it is held up.



<b>St</b>	Steel
<b>FS</b>	Strip galvanized

### Master data

Item number	6044591
Type	STP Z 1060 FS
Description 1	Support profile
Description 2	Z type, for BKRS
Manufacturer	OBO
Dimension	100x600
Colour	zinc
Material	Steel
Surface	Strip galvanized
Surface standard	DIN EN 10346
Smallest sales unit	1
Unit of quantity	Piece
Weight	127.34 kg
Weight unit	kg/100 pc.
CO2 Footprint (GWP) Cradle-to-Gate	3,8245 kg CO2e / 1 Piece

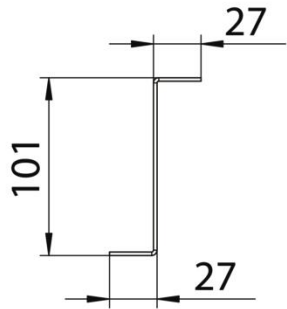
# Technical data sheet

## Support profile 100 FS

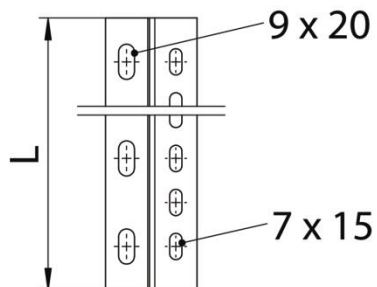
Item number: 6044591



### Dimensions



Length	600 mm
Width	600 mm
Height	100 mm
Dimension L	24 in
Dimension L	600 mm



### Technical data

Material thickness (inches)	0.08 in
Material thickness	2 mm
Rustproof steel, pickled	no