



Classified
according to
EN 13501-2



PYROLINE® Rapid PLM

Metal fire protection duct with ETA certification



100% fire protection. 0% stress.

PYROLINE® Rapid PLM: Safe, simple and aesthetic

Saving human lives and, at the same time, reducing damage to a building or its contents to a minimum: During a fire, these top priorities can now be implemented considerably more easily with the new generation of the PYROLINE® Rapid PLM fire protection duct series from OBO. The duct series combines the properties of a safe and classified fire duct with those of standard electrical installation duct. This prevents the spread of fire through the electrical installation and offers flexible and discreet solutions, which stand out both in new buildings and during modernisation projects.



Klassifiziert
gemäß
EN 13501-2

Well thought-out protection, implemented elegantly

PYROLINE® Rapid PLM is a closed system made from sheet steel with a profiled cover-locking contour and an intumescent fire protection fabric in the interior, which foams up in the event of fire and encapsulates the fire loads of the combustible cable insulation. It can be installed directly on the wall or the ceiling, as well as suspended on different mounting systems.

On the outside, the PYROLINE® Rapid PLM fire protection duct cannot be distinguished from an electrical installation duct after installation has been completed. This is facilitated by patented, internal connection and sealing technology. The innovative internal connector set connects and closes the fire protection duct system in such a way that it is smoke gas-tight.

Innovative, flexible, safe!



This is how fire protection should look

The PYROLINE® Rapid PLM fire protection duct ensures flexible and aesthetic mounting: Besides the standard mounting type with an offset between the joint of the duct trough and the joint of the duct cover, the connection technology also means that mounting is possible in a room corner or with no spacing between two ducts. The connector sets are designed to be used without tools, meaning that they do not require any additional screws or fastenings in the substrate.

Ensures safety everywhere

With a wide portfolio of components and the matching accessories, a suitable solution can be developed from the PYROLINE® Rapid PLM system for almost any situation. The perfect symbiosis of simple handling, high-quality appearance and certified safety ensure that fire protection can be implemented considerably more simply, economically and aesthetically.

You can find out more about the benefits of PYROLINE® Rapid PLM on the following pages. We have compiled information on the proof of suitability for you on Page 10.

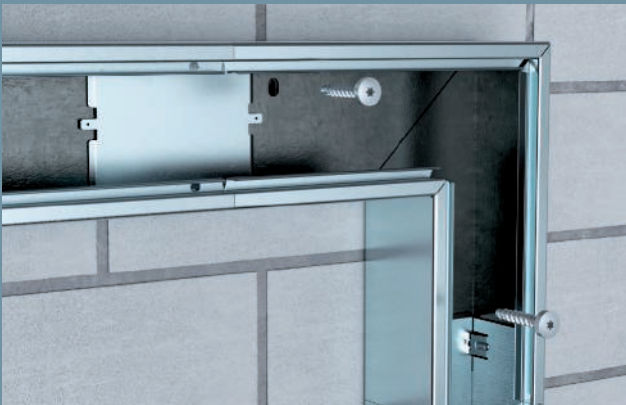
Overview of the installation principle



Direct wall mounting



Suspended mounting on mounting system



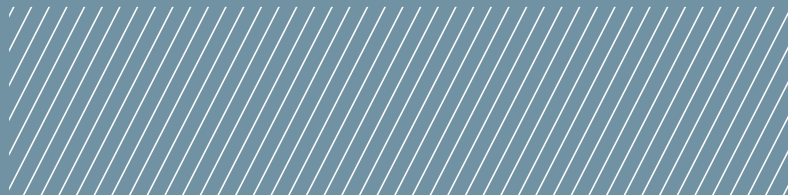
Direct wall mounting with flat angle



Suspended mounting with flat angle

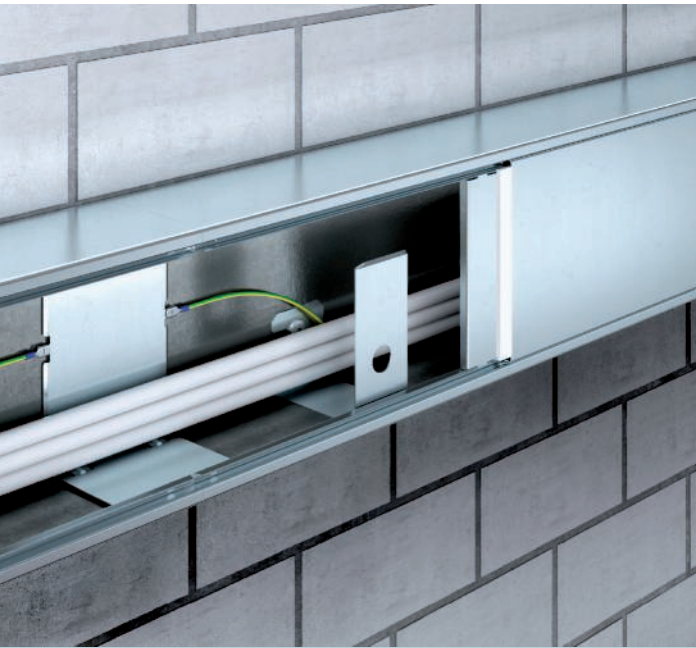


Room corner mounting



You can find all the component parts of the system in the product information, from page 12 onwards.

Uniquely simple to handle.



Quick and flexible thanks to patented connection technology

The core of the PYROLINE® Rapid PLM fire protection system is a cable trough with profiled cover closure contour and a matching duct cover. During installation, the duct is fastened to the wall or mounting system, filled and then closed with the cover. Here, the system uses inner connectors, in order to combine the individual duct segments and to seal them. This opens a wide range of benefits for the installation.

A real plus: Internal connectors



Toolless connection



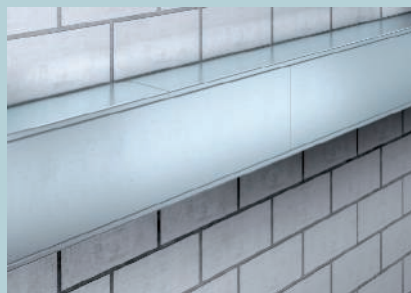
Central alignment using notches



Clicking-in of the floor plate



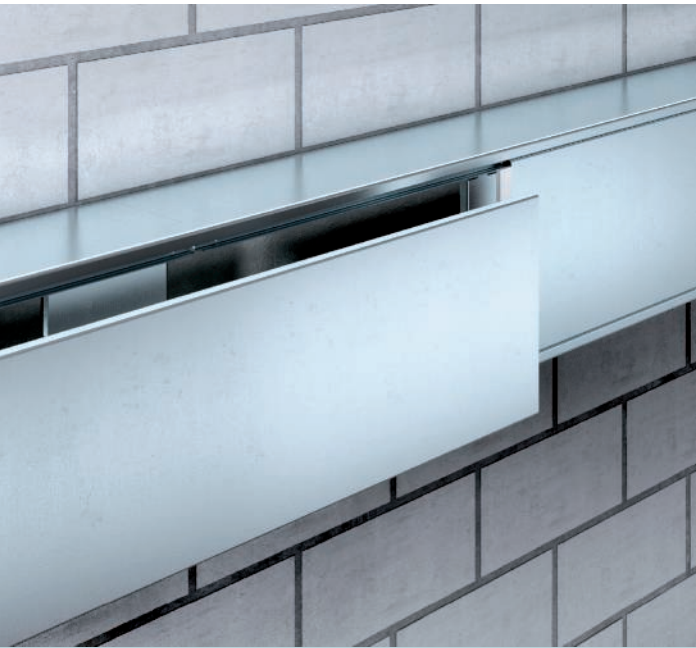
Cover support at joints



Joint offset for more stability

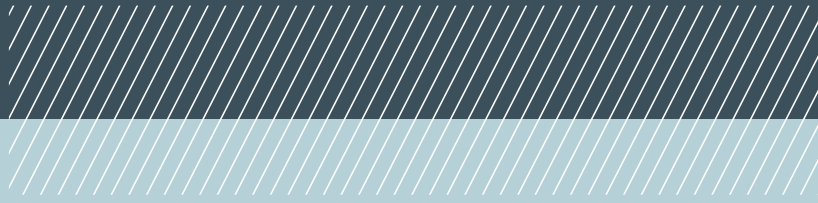


Installation procedures without outside influences

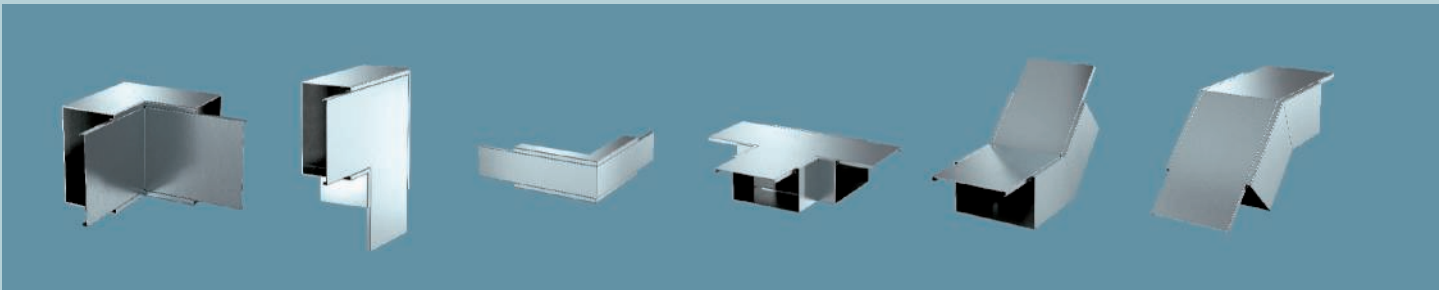


Locking cover

Remains stable without screwing, thanks to the closing contour (simple retroassignment).



Factory-made fittings



Simple change of direction for all mounting types

Four dimensions



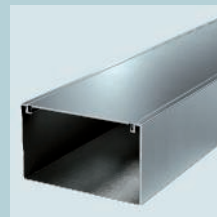
40 x 40



40 x 100



80 x 100



120 x 200

Uncompromisingly good.



Safety that fits the architecture

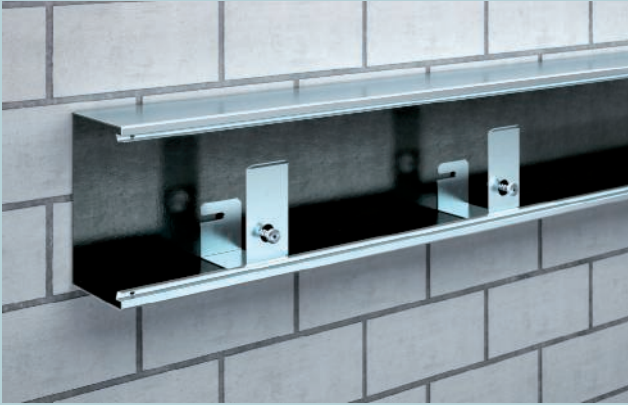
PYROLINE® Rapid PLM harmonises visual and technical requirements perfectly: From the outside, it looks like a simple, yet high-quality cable duct. Thanks to its discreet design, it is also suitable for areas of use with high aesthetic requirements. At the same time, the long-term European classification according to EN 13501-2 ensures that fire protection can now be viewed with new eyes.

Simply good design

- Modern, consistently discreet line guidance
- Jointless, flush mounting up to the room corners
- In strip galvanised sheet steel and powder-coated in pure white RAL 9010
- Completely invisible connection technology thanks to base perforation and internal connectors

Uniquely intelligent safety

- Can be used throughout Europe due to the EN classification
- Reliable sealing through internal connectors
- Simple equipotential bonding using a flat connector
- Patented simple connector for reliable installation results



Pressure clip for safe cable routing



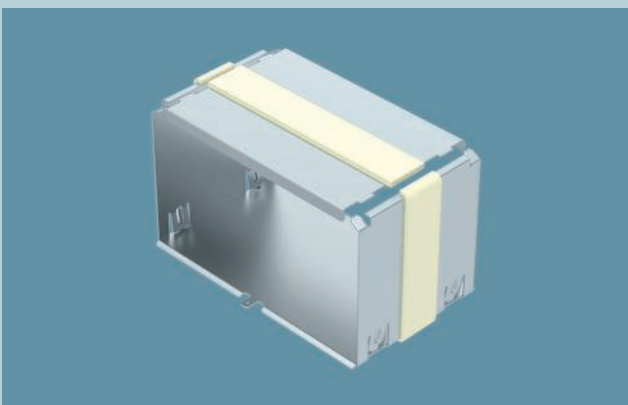
Equipotential bonding between segments



Version with RAL 9010 powder coating



Strip-galvanised sheet steel version



Sealing through internal connectors



Good to know: Basic information, fire protection ducts.

Protection functions

If there is a fire, then the fire protection ducts make a contribution to the usability of the escape routes, for example by protecting them against possible fires of the electrical cables, thus preventing the spread of fire. In particular, they fulfil two functions:

- Fire protection ducts are used wherever the environment must be protected against the impacts of cable fires. They encapsulate the fire load, meaning that, in the event of a cable fire, fire and smoke cannot escape from the ducts.
- In addition, it ensures that the cables located in the fire protection duct are not a part of the fire.



EU-wide approval

Fire protection ducts must fulfil certain requirements for them to be used in buildings. They are construction products according to the European Construction Products Regulation CPR (EU No. 205/2011) and thus carry the CE mark. This means that they can be used in all the countries of the EU.

Testing according to EN 1366-5

On their own, the individual construction products do not fulfil construction law requirements regarding fire protection. Only the combination of the individual construction products, consisting of fittings and duct sections, create a fire-resistant installation duct, which can be fastened on classified walls, ceilings or on mounting systems.

The installation duct is tested according to EN 1366-5, where the fire protection properties where a room ends, and heat insulation during a fire, are determined. This ensures that combustible substances cannot ignite on the surfaces of the installation duct.

Classifications

During a fire test according to EN 1366-5, a cable fire in the interior of the duct is simulated. The ducts are filled with cables. The cable exits are also tested. This determines whether fire and smoke can escape from the duct and whether the duct surfaces outside the testing furnaces heat up to an unpermitted level.

Then the fire resistance of the installation is classified according to EN 13501-2. This in turn produces the classifications given alongside, for example.

E120 (h_o i ↔ o) / EI 90 (h_o i ↔ o)

The abbreviations stand for the following properties:

E	Integrity (Etanchéité)
I	Heat insulation
30–120	Time in minutes of the achieved class
h _o	Horizontal arrangement (includes vertical arrangements within fire sections without ceiling penetrations)
i → o ←	Direction of the fire impact, here from inside to outside and from outside to inside

St FS P

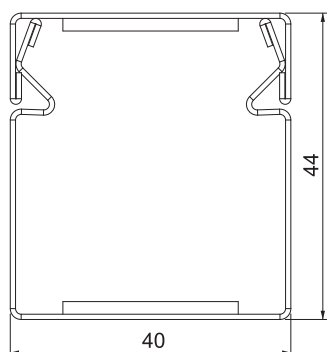
Installation duct with PYROLINE® Rapid PLM fire protection mesh, duct height 44 mm



Type	Colour	Dim. B mm	Dim. H mm	Dim. L mm	Max. specific impedance Z1 mΩ/m	Dim. L mm	Colour	Min. ordering quantity m	Item no.
PLM D 0404 FS	zinc	40	44	2000	2				7218000
PLM D 0404 RW	Pure white	40	44	2000	2				7218002

Metal installation duct with intumescent fire protection mesh for fireproof routing of cables. Classified as an installation duct EI30, EI60 and EI90 according to EN 13501-2, tested according to EN 1366-5. The duct prevents the fire spread for the classified period of time, offering protection against the effects of a cable fire. Suitable for direct wall and ceiling mounting, mounting below system floors and on support systems. Tool-free joint mounting with PLM SI joint connector. The cover is snapped on without tools, allowing rapid inspection and retroassignment. Offset cover mounting for continuous equipotential bonding of the entire duct section.

Dimensions



Installation duct with PYROLINE® Rapid PLM fire protection mesh, duct height 40 mm

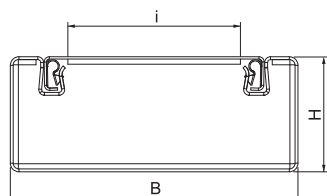
St FS P



Type	Dim. B mm	Dim. H mm	Dim. i mm	max. specific impedance Z1 mΩ/m	Dim. L mm	Colour	Min. ordering quantity m	Item no.
PLM D 0410 FS	100	40	62	2	2000	zinc	2	7218004
PLM D 0410 RW	100	40	62	2	2000	Pure white	2	7218006

Metal installation duct with intumescent fire protection mesh for fireproof routing of cables. Classified as an installation duct EI30, EI60 and EI90 according to EN 13501-2, tested according to EN 1366-5. The duct prevents the fire spread for the classified period of time, offering protection against the effects of a cable fire. Suitable for direct wall and ceiling mounting, mounting below system floors and on support systems. Tool-free joint mounting with PLM SI joint connector. Only approved pre-terminated fittings may be used. The cover is snapped on without tools, allowing rapid inspection and retroassignment. Offset cover mounting for continuous equipotential bonding of the entire duct section.

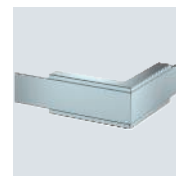
Dimensions



St FS P

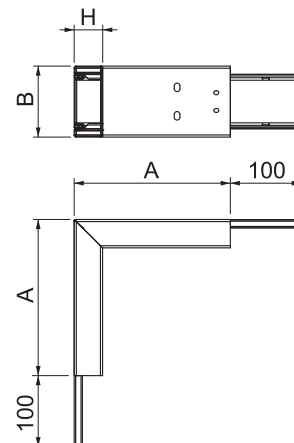
External corner, duct height 40 mm

Type	Colour	Dim. A mm	Dim. B mm	Dim. H mm	Min. ordering quantity Piece	Item no.
PLM EC 0410 FS	zinc	220	100	40	1	7218038
PLM EC 0410 RW	Pure white	220	100	40	1	7218040



External corner with intumescent fire protection mesh for PYROLINE® Rapid PLM installation duct. Suitable for direct wall and ceiling mounting, mounting below system floors and on support systems. Tool-free joint mounting with PLM SI joint connector. The cover is snapped on without tools, allowing rapid inspection and retroassignment. The cover overhang allows offset cover mounting for continuous equipotential bonding of the entire duct section.

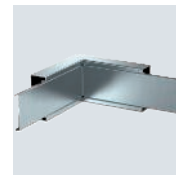
Dimensions



St FS P

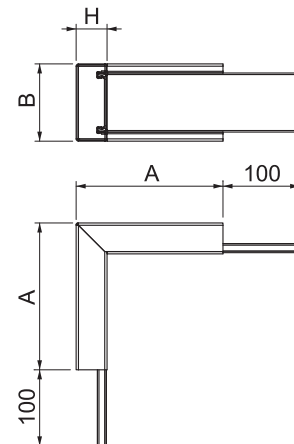
Internal corner, duct height 40 mm

Type	Colour	Dim. A mm	Dim. B mm	Dim. H mm	Min. ordering quantity Piece	Item no.
PLM IC 0410 FS	zinc	190	100	40	1	7218050
PLM IC 0410 RW	Pure white	190	100	40	1	7218052



Internal corner with intumescent fire protection mesh for PYROLINE® Rapid PLM installation duct. Suitable for direct wall and ceiling mounting, mounting below system floors and on support systems. Tool-free joint mounting with PLM SI joint connector. The cover is snapped on without tools, allowing rapid inspection and retroassignment. The cover overhang allows offset cover mounting for continuous equipotential bonding of the entire duct section.

Dimensions



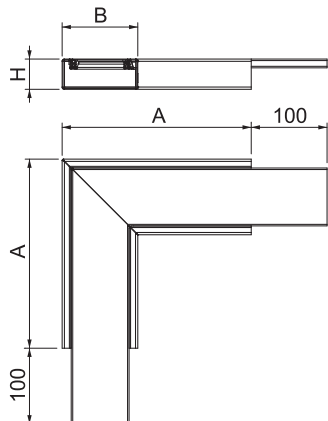
Flat angle, duct height 40 mm



Type	Colour	Dim. A mm	Dim. B mm	Dim. H mm	Dim. quantity	Min. ordering quantity Piece	Item no.
PLM FA 0410 FS	zinc	250	100	40	1		7218062
PLM FA 0410 RW	Pure white	250	100	40	1		7218064

Flat angle with intumescent fire protection mesh for PYROLINE® Rapid PLM installation duct. Suitable for direct wall and ceiling mounting, mounting below system floors and on support systems. Tool-free joint mounting with PLM SI joint connector. The cover is snapped on without tools, allowing rapid inspection and retroassignment. The cover overhang allows offset cover mounting for continuous equipotential bonding of the entire duct section.

Dimensions



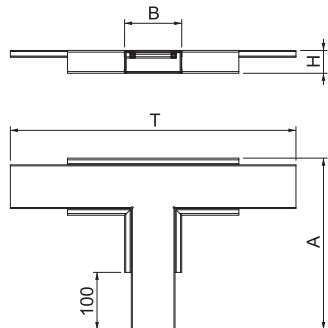
T branch piece, duct height 40 mm



Type	Colour	Dim. A mm	Dim. B mm	Dim. H mm	Dim. T mm	Dim. quantity	Min. ordering quantity Piece	Item no.
PLM TB 0410 FS	zinc	300	100	40	500	1		7218074
PLM TB 0410 RW	Pure white	300	100	40	500	1		7218076

Tee with intumescent fire protection mesh for PYROLINE® Rapid PLM installation duct. Suitable for direct wall and ceiling mounting, mounting below system floors and on support systems. Tool-free joint mounting with PLM SI joint connector. The cover is snapped on without tools, allowing rapid inspection and retroassignment. The cover overhang allows offset cover mounting for continuous equipotential bonding of the entire duct section.

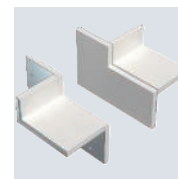
Dimensions



St FS P

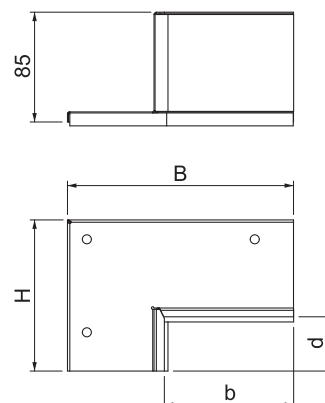
Wall connection set, 2-sided, for corner mounting, duct height 40 mm

Type	Colour	Dim. B mm	Dim. H mm	Dim. b mm	Dim. d mm	Min. ordering quantity Piece	Item no.
PLM CC 0410 FS	zinc	175	117	100	42	1	7218134
PLM CC 0410 RW	Pure white	175	117	100	42	1	7218136



Wall connection collar, 2-sided, with integrated seal for PYROLINE® Rapid PLM installation duct. For mounting in the area of wall and ceiling connections as well as wall penetrations in room corners. Set consisting of 2 opposing components, suitable for ceiling or wall mounting of the installation duct.

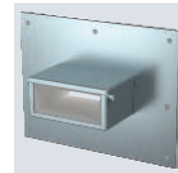
Dimensions



St FS P

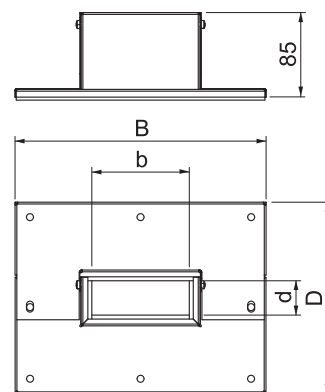
Wall connection collar, 3- and 4-sided, duct height 40 mm

Type	Colour	Dim. B mm	Dim. b mm	Dim. D mm	Dim. d mm	Min. ordering quantity Piece	Item no.
PLM WC 0410 FS	zinc	252	100	192	40	1	7218122
PLM WC 0410 RW	Pure white	252	100	192	40	1	7218124



Wall connection collar, 4-sided, with integrated seal for PYROLINE® Rapid PLM installation duct. For mounting in the area of wall and ceiling connections as well as wall penetrations. Can also be used as 3-sided wall connection collar for direct wall or ceiling mounting of the duct.

Dimensions



St FS P

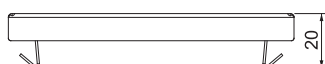
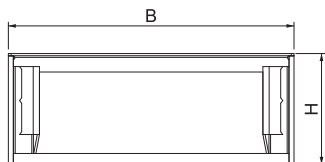
End piece, duct height 40 mm



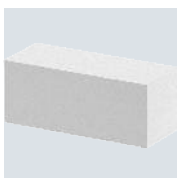
Type	Colour	Dim. B mm	Dim. H mm	Min. ordering quantity Piece	Item no.
PLM EP 0410 FS	zinc	105	41	1	7218086
PLM EP 0410 RW	Pure white	105	41	1	7218088

End piece with intumescent fire protection mesh to close the PYROLINE® Rapid PLM installation duct.

Dimensions



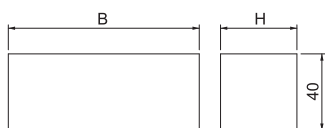
Foam seal, duct height 40 mm



Type	Dim. B mm	Dim. H mm	Min. ordering quantity Piece	Item no.
PLM CO 0410	100	40	1	7218158

Flexibly adjustable foam seal for PYROLINE® Rapid PLM installation duct to seal cable bundles or cables with a large external diameter for cable exits from the installation duct. The surface must be additionally sealed with the ASX ablation coating.

Dimensions



St FS

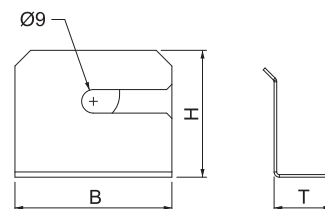
Pressure clip for wall mounting, duct height 40 mm

Type	Dim. B mm	Dim. H mm	Dim. T mm	Dim. quantity mm	Min. ordering quantity Piece	Item no.
PLM WB 0410 FS	60	49	22	10		7218152



Installation aid against cables falling out for wall mounting of the PLM D 0410 installation duct.

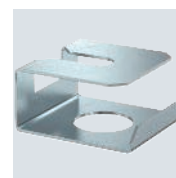
Dimensions



St FS

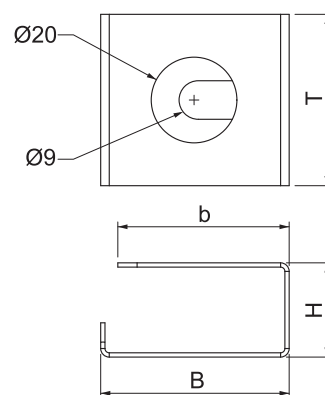
Pressure clip for ceiling mounting, duct height 40 mm

Type	Dim. B mm	Dim. H mm	Dim. T mm	Dim. b mm	Dim. quantity mm	Min. ordering quantity Piece	Item no.
PLM CB 0410 FS	44	22	40	40	10		7218146

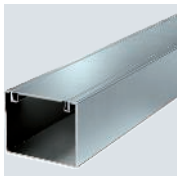


Installation aid against cables falling out for ceiling mounting of the PLM D 0410 installation duct.

Dimensions



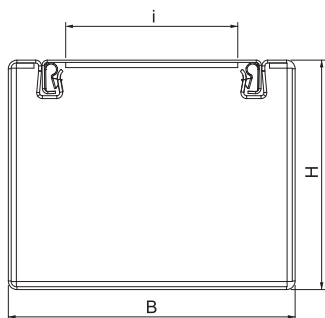
Installation duct with PYROLINE® Rapid PLM fire protection mesh, duct height 80 mm



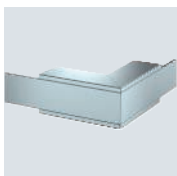
Type	Dim. B mm	Dim. H mm	Dim. i mm	max. specific impedance Z1 mΩ/m	Dim. L mm	Colour	Min. ordering quantity m	Item no.
PLM D 0810 FS	100	80	62	2	2000	zinc	2	7218008
PLM D 0810 RW	100	80	62	2	2000	Pure white	2	7218010

Metal installation duct with intumescent fire protection mesh for fireproof routing of cables. Classified as an installation duct EI30, EI60 and EI90 according to EN 13501-2, tested according to EN 1366-5. The duct prevents the fire spread for the classified period of time, offering protection against the effects of a cable fire. Suitable for direct wall and ceiling mounting, mounting below system floors and on support systems. Tool-free joint mounting with PLM SI joint connector. Only approved pre-terminated fittings may be used. The cover is snapped on without tools, allowing rapid inspection and retroassignment. Offset cover mounting for continuous equipotential bonding of the entire duct section.

Dimensions



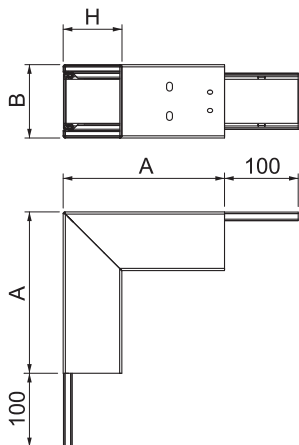
External corner, duct height 80 mm



Type	Colour	Dim. A mm	Dim. B mm	Dim. H mm	Min. ordering quantity Piece	Item no.
PLM EC 0810 FS	zinc	220	100	80	1	7218042
PLM EC 0810 RW	Pure white	220	100	80	1	7218044

External corner with intumescent fire protection mesh for PYROLINE® Rapid PLM installation duct. Suitable for direct wall and ceiling mounting, mounting below system floors and on support systems. Tool-free joint mounting with PLM SI joint connector. The cover is snapped on without tools, allowing rapid inspection and retroassignment. The cover overhang allows offset cover mounting for continuous equipotential bonding of the entire duct section.

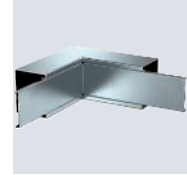
Dimensions



St FS P

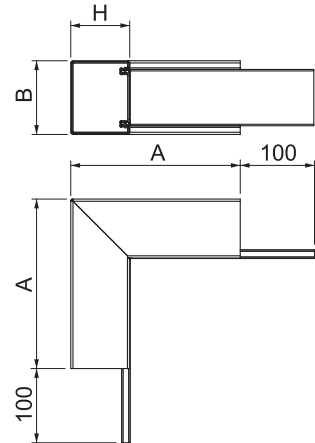
Internal corner, duct height 80 mm

Type	Colour	Dim. A mm	Dim. B mm	Dim. H mm	Min. ordering quantity Piece	Item no.
PLM IC 0810 FS	zinc	230	100	80	1	7218054
PLM IC 0810 RW	Pure white	230	100	80	1	7218056



Internal corner with intumescent fire protection mesh for PYROLINE® Rapid PLM installation duct. Suitable for direct wall and ceiling mounting, mounting below system floors and on support systems. Tool-free joint mounting with PLM SI joint connector. The cover is snapped on without tools, allowing rapid inspection and retroassignment. The cover overhang allows offset cover mounting for continuous equipotential bonding of the entire duct section.

Dimensions



St FS P

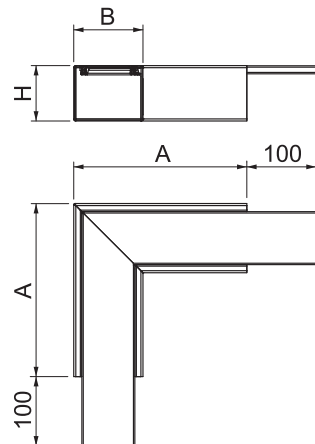
Flat angle, duct height 80 mm

Type	Colour	Dim. A mm	Dim. B mm	Dim. H mm	Min. ordering quantity Piece	Item no.
PLM FA 0810 FS	zinc	250	100	80	1	7218066
PLM FA 0810 RW	Pure white	250	100	80	1	7218068



Flat angle with intumescent fire protection mesh for PYROLINE® Rapid PLM installation duct. Suitable for direct wall and ceiling mounting, mounting below system floors and on support systems. Tool-free joint mounting with PLM SI joint connector. The cover is snapped on without tools, allowing rapid inspection and retroassignment. The cover overhang allows offset cover mounting for continuous equipotential bonding of the entire duct section.

Dimensions



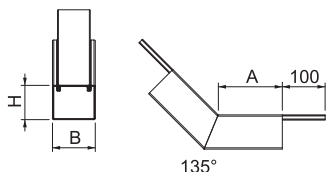
Vertical bend, rising, duct height 80 mm



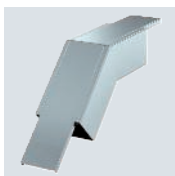
Type	Colour	Dim. A mm	Dim. B mm	Dim. H mm	Min. ordering quantity Piece	Item no.
PLM BR 0810 FS	zinc	150	100	80	1	7218114
PLM BR 0810 RW	Pure white	150	100	80	1	7218116

45° vertical bend, rising version, with intumescent fire protection mesh for PYROLINE® Rapid PLM installation duct. Suitable for direct wall and ceiling mounting, mounting below system floors and on support systems. Tool-free joint mounting with PLM SJ joint connector. The cover is snapped on without tools, allowing rapid inspection and retroassignment. The cover overhang allows offset cover mounting for continuous equipotential bonding of the entire duct section.

Dimensions



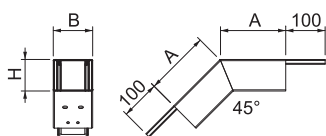
Vertical bend, falling, duct height 80 mm



Type	Colour	Dim. A mm	Dim. B mm	Dim. H mm	Min. ordering quantity Piece	Item no.
PLM BF 0810 FS	zinc	165	100	80	1	7218106
PLM BF 0810 RW	Pure white	165	100	80	1	7218108

45° vertical bend, falling version, with intumescent fire protection mesh for PYROLINE® Rapid PLM installation duct. Suitable for direct wall and ceiling mounting, mounting below system floors and on support systems. Tool-free joint mounting with PLM SJ joint connector. The cover is snapped on without tools, allowing rapid inspection and retroassignment. The cover overhang allows offset cover mounting for continuous equipotential bonding of the entire duct section.

Dimensions



St FS P

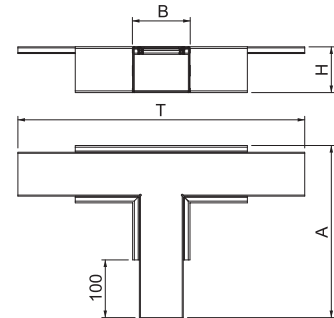
T branch piece, duct height 80 mm

Type	Colour	Dim. A mm	Dim. B mm	Dim. H mm	Dim. T mm	Min. ordering quantity Piece	Item no.
PLM TB 0810 FS	zinc	300	100	80	500	1	7218078
PLM TB 0810 RW	Pure white	300	100	80	500	1	7218080



Tee with intumescent fire protection mesh for PYROLINE® Rapid PLM installation duct. Suitable for direct wall and ceiling mounting, mounting below system floors and on support systems. Tool-free joint mounting with PLM SI joint connector. The cover is snapped on without tools, allowing rapid inspection and retroassignment. The cover overhang allows offset cover mounting for continuous equipotential bonding of the entire duct section.

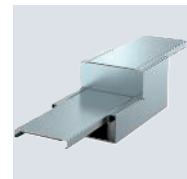
Dimensions



St FS P

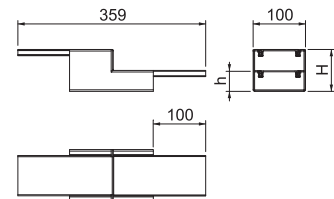
Reducer, straight, from 80 mm to 40 mm duct height

Type	Colour	Dim. H mm	Dim. h mm	Min. ordering quantity Piece	Item no.
PLM RP 0810 FS	zinc	80	40	1	7218098
PLM RP 0810 RW	Pure white	80	40	1	7218100

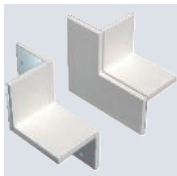


Reducer with intumescent fire protection mesh for symmetrical reduction of straight duct sections from PLM D 0810 to PLM D 0410. Suitable for direct wall and ceiling mounting, mounting below system floors and on support systems. Tool-free joint mounting with PLM SI joint connector. The cover is snapped on without tools, allowing rapid inspection and retroassignment. The cover overhang allows offset cover mounting for continuous equipotential bonding of the entire duct section.

Dimensions



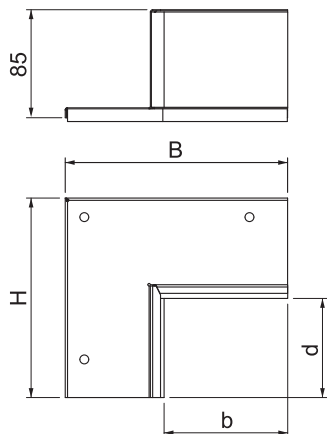
Wall connection set, double-sided, for corner mounting, duct height 80 mm



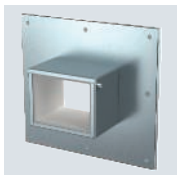
Type	Colour	Dim. B mm	Dim. H mm	Dim. b mm	Dim. d mm	Min. ordering quantity Piece	Item no.
PLM CC 0810 FS	zinc	175	157	100	82	1	7218138
PLM CC 0810 RW	Pure white	175	157	100	82	1	7218140

Wall connection collar, 2-sided, with integrated seal for PYROLINE® Rapid PLM installation duct. For mounting in the area of wall and ceiling connections as well as wall penetrations in room corners. Set consisting of 2 opposing components, suitable for ceiling or wall mounting of the installation duct.

Dimensions



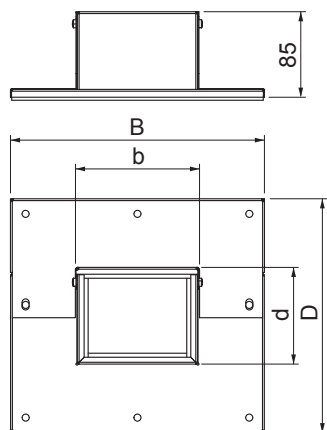
Wall connection collar, 3- and 4-sided, duct height 80 mm



Type	Colour	Dim. B mm	Dim. b mm	Dim. D mm	Dim. d mm	Min. ordering quantity Piece	Item no.
PLM WC 0810 FS	zinc	252	100	232	80	1	7218126
PLM WC 0810 RW	Pure white	252	100	232	80	1	7218128

Wall connection collar, 4-sided, with integrated seal for PYROLINE® Rapid PLM installation duct. For mounting in the area of wall and ceiling connections as well as wall penetrations. Can also be used as 3-sided wall connection collar for direct wall or ceiling mounting of the duct.

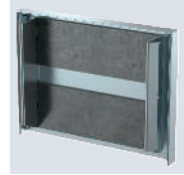
Dimensions



St FS P

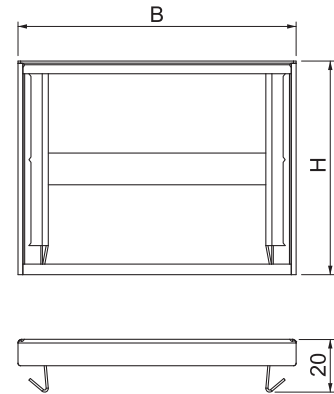
End piece, duct height 80 mm

Type	Colour	Dim. B mm	Dim. H mm	Min. ordering quantity Piece	Item no.
PLM EP 0810 FS	zinc	105	81	1	7218090
PLM EP 0810 RW	Pure white	105	81	1	7218092



End piece with intumescent fire protection mesh to close the PYROLINE® Rapid PLM installation duct.

Dimensions



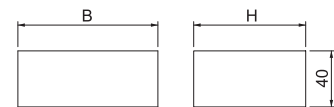
Foam seal, duct height 80 mm

Type	Dim. B mm	Dim. H mm	Min. ordering quantity Piece	Item no.
PLM CO 0810	100	80	1	7218160



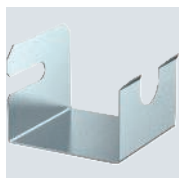
Flexibly adjustable foam seal for PYROLINE® Rapid PLM installation duct to seal cable bundles or cables with a large external diameter for cable exits from the installation duct. The surface must be additionally sealed with the ASX ablation coating.

Dimensions



Pressure clip for wall mounting, duct height 80 mm

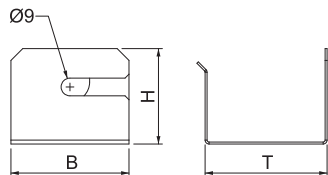
St FS



Type	Dim. B mm	Dim. H mm	Dim. T mm	Dim. quantity mm Piece	Min. ordering quantity Piece	Item no.
PLM WB 0810 FS	60	49	62	10		7218154

Installation aid against cables falling out during wall mounting of the PLM D 0810 installation duct.

Dimensions



Pressure clip for ceiling mounting, duct height 80 mm

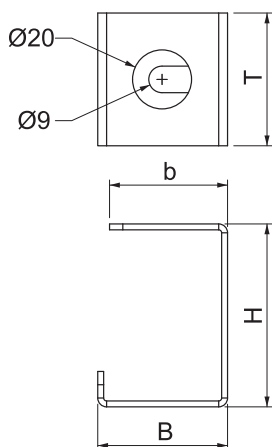
St FS



Type	Dim. B mm	Dim. H mm	Dim. T mm	Dim. b mm	Dim. quantity mm Piece	Min. ordering quantity Piece	Item no.
PLM CB 0810 FS	44	62	45	40	10		7218148

Installation aid against cables falling out during ceiling mounting of the PLM D 0810 installation duct.

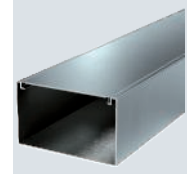
Dimensions



St FS P

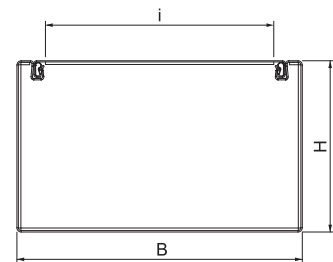
Installation duct with PYROLINE® Rapid PLM fire protection mesh, duct height 120 mm

Type	Dim. B mm	Dim. H mm	Dim. i mm	max. specific impedance Z1 mΩ/m	Dim. L mm	Colour	Min. ordering quantity m	Item no.
PLM D 1220 FS	200	120	162	2	2000	zinc	2	7218012
PLM D 1220 RW	200	120	162	2	2000	Pure white	2	7218014



Metal installation duct with intumescent fire protection mesh for fireproof routing of cables. Classified as an installation duct EI30, EI60 and EI90 according to EN 13501-2, tested according to EN 1366-5. The duct prevents the fire spread for the classified period of time, offering protection against the effects of a cable fire. Suitable for direct wall and ceiling mounting, mounting below system floors and on support systems. Tool-free joint mounting with PLM SI joint connector. Only approved pre-terminated fittings may be used. The cover is snapped on without tools, allowing rapid inspection and retroassignment. Offset cover mounting for continuous equipotential bonding of the entire duct section.

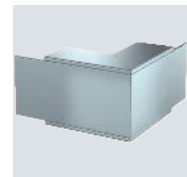
Dimensions



St FS P

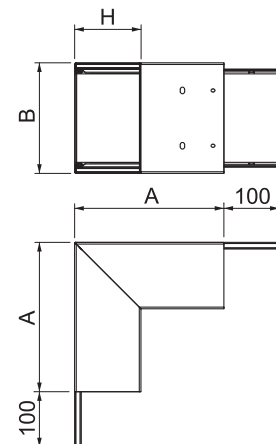
External corner, duct height 120 mm

Type	Colour	Dim. A mm	Dim. B mm	Dim. H mm	Min. ordering quantity Piece	Item no.
PLM EC 1220 FS	zinc	270	200	120	1	7218046
PLM EC 1220 RW	Pure white	270	200	120	1	7218048

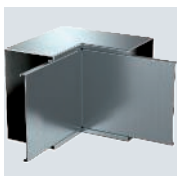


External corner with intumescent fire protection mesh for PYROLINE® Rapid PLM installation duct. Suitable for direct wall and ceiling mounting, mounting below system floors and on support systems. Tool-free joint mounting with PLM SI joint connector. The cover is snapped on without tools, allowing rapid inspection and retroassignment. The cover overhang allows offset cover mounting for continuous equipotential bonding of the entire duct section.

Dimensions



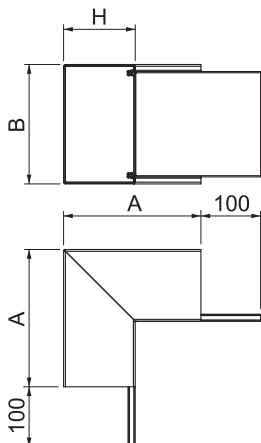
Internal corner, duct height 120 mm



Type	Colour	Dim. A mm	Dim. B mm	Dim. H mm	Min. ordering quantity Piece	Item no.
PLM IC 1220 FS	zinc	230	200	120	1	7218058
PLM IC 1220 RW	Pure white	230	200	120	1	7218060

Internal corner with intumescent fire protection mesh for PYROLINE® Rapid PLM installation duct. Suitable for direct wall and ceiling mounting, mounting below system floors and on support systems. Tool-free joint mounting with PLM SI joint connector. The cover is snapped on without tools, allowing rapid inspection and reassignment. The cover overhang allows offset cover mounting for continuous equipotential bonding of the entire duct section.

Dimensions



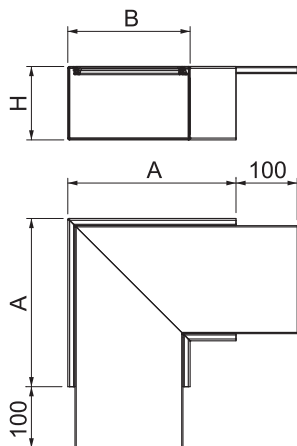
Flat angle, duct height 120 mm



Type	Colour	Dim. A mm	Dim. B mm	Dim. H mm	Min. ordering quantity Piece	Item no.
PLM FA 1220 FS	zinc	275	200	120	1	7218070
PLM FA 1220 RW	Pure white	275	200	120	1	7218072

Flat angle with intumescent fire protection mesh for PYROLINE® Rapid PLM installation duct. Suitable for direct wall and ceiling mounting, mounting below system floors and on support systems. Tool-free joint mounting with PLM SI joint connector. The cover is snapped on without tools, allowing rapid inspection and reassignment. The cover overhang allows offset cover mounting for continuous equipotential bonding of the entire duct section.

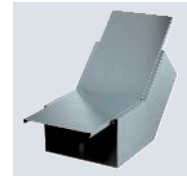
Dimensions



St FS P

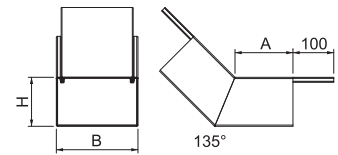
Vertical bend, rising, duct height 120 mm

Type	Colour	Dim. A mm	Dim. B mm	Dim. H mm	Min. ordering quantity Piece	Item no.
PLM BR 1220 FS	zinc	142	200	120	1	7218118
PLM BR 1220 RW	Pure white	142	200	120	1	7218120



45° vertical bend, rising version, with intumescent fire protection mesh for PYROLINE® Rapid PLM installation duct. Suitable for direct wall and ceiling mounting, mounting below system floors and on support systems. Tool-free joint mounting with PLM SI joint connector. The cover is snapped on without tools, allowing rapid inspection and retroassignment. The cover overhang allows offset cover mounting for continuous equipotential bonding of the entire duct section.

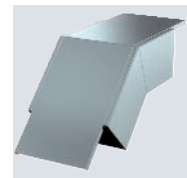
Dimensions



St FS P

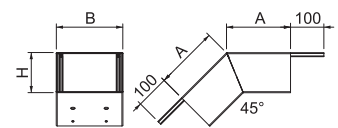
Vertical bend, falling, duct height 120 mm

Type	Colour	Dim. A mm	Dim. B mm	Dim. H mm	Min. ordering quantity Piece	Item no.
PLM BF 1220 FS	zinc	190	200	120	1	7218110
PLM BF 1220 RW	Pure white	190	200	120	1	7218112

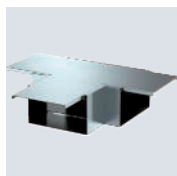


45° vertical bend, falling version, with intumescent fire protection mesh for PYROLINE® Rapid PLM installation duct. Suitable for direct wall and ceiling mounting, mounting below system floors and on support systems. Tool-free joint mounting with PLM SI joint connector. The cover is snapped on without tools, allowing rapid inspection and retroassignment. The cover overhang allows offset cover mounting for continuous equipotential bonding of the entire duct section.

Dimensions



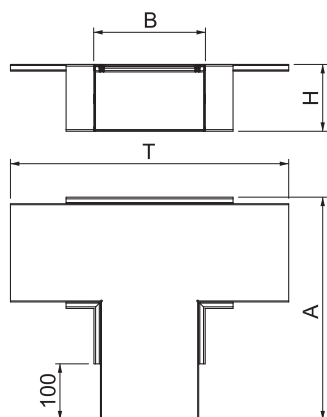
Tee, duct height 120 mm



Type	Colour	Dim. A mm	Dim. B mm	Dim. H mm	Dim. T mm	Min. ordering quantity Piece	Item no.
PLM TB 1220 FS	zinc	400	200	120	600	1	7218082
PLM TB 1220 RW	Pure white	400	200	120	600	1	7218084

Tee with intumescent fire protection mesh for PYROLINE® Rapid PLM installation duct. Suitable for direct wall and ceiling mounting, mounting below system floors and on support systems. Tool-free joint mounting with PLM SI joint connector. The cover is snapped on without tools, allowing rapid inspection and retroassignment. The cover overhang allows offset cover mounting for continuous equipotential bonding of the entire duct section.

Dimensions



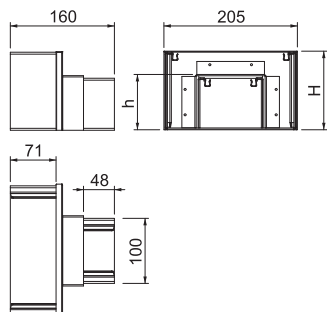
Reducer, straight, from 120 mm to 80 mm duct height



Type	Colour	Dim. H mm	Dim. h mm	Min. ordering quantity Piece	Item no.
PLM RP 1220 FS	zinc	120	80	1	7218102
PLM RP 1220 RW	Pure white	120	80	1	7218104

Reducer with intumescent fire protection mesh for symmetrical reduction of straight duct sections from PLM D 1220 to PLM D 0810. Suitable for direct wall and ceiling mounting, mounting below system floors and on support systems. Tool-free joint mounting with PLM SI joint connector. The cover is snapped on without tools, allowing rapid inspection and retroassignment. The cover overhang allows offset cover mounting for continuous equipotential bonding of the entire duct section.

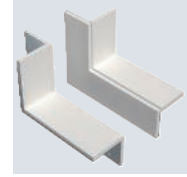
Dimensions



St FS P

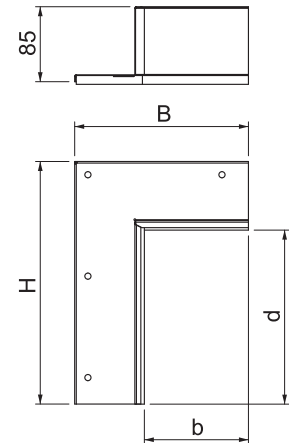
Wall connection set, double-sided, for corner mounting, duct height 120 mm

Type	Colour	Dim. B mm	Dim. b mm	Dim. H mm	Dim. d mm	Min. ordering quantity Piece	Item no.
PLM CC 1220 FS	zinc	275	200	197	122	1	7218142
PLM CC 1220 RW	Pure white	275	200	197	122	1	7218144



Wall connection collar, 2-sided, with integrated seal for PYROLINE® Rapid PLM installation duct. For mounting in the area of wall and ceiling connections as well as wall penetrations in room corners. Set consisting of 2 opposing components, suitable for ceiling or wall mounting of the installation duct.

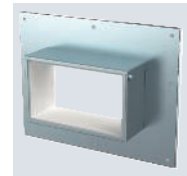
Dimensions



St FS P

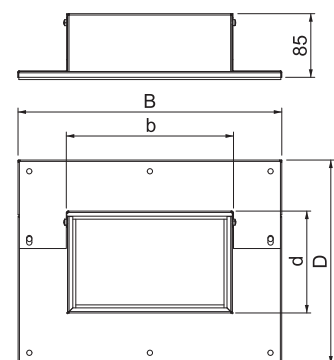
Wall connection collar, 3- and 4-sided, duct height 120 mm

Type	Colour	Dim. B mm	Dim. b mm	Dim. D mm	Dim. d mm	Min. ordering quantity Piece	Item no.
PLM WC 1220 FS	zinc	352	200	272	120	1	7218130
PLM WC 1220 RW	Pure white	352	200	272	120	1	7218132

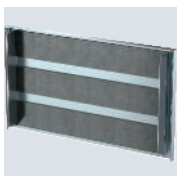


Wall connection collar, 4-sided, with integrated seal for PYROLINE® Rapid PLM installation duct. For mounting in the area of wall and ceiling connections as well as wall penetrations. Can also be used as 3-sided wall connection collar for direct wall or ceiling mounting of the duct.

Dimensions



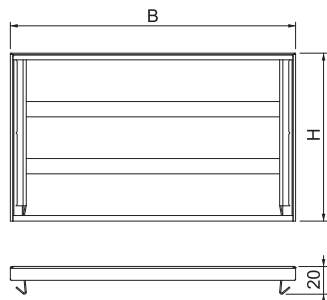
End piece, duct height 120 mm



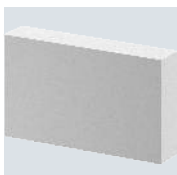
Type	Colour	Dim. B mm	Dim. H mm	Min. ordering quantity Piece	Item no.
PLM EP 1220 FS	zinc	205	121	1	7218094
PLM EP 1220 RW	Pure white	205	121	1	7218096

End piece with intumescent fire protection mesh to close the PYROLINE® Rapid PLM installation duct.

Dimensions



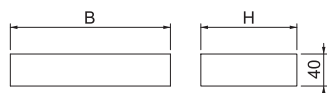
Foam seal, duct height 120 mm



Type	Dim. B mm	Dim. H mm	Min. ordering quantity Piece	Item no.
PLM CO 1220	200	120	1	7218162

Flexibly adjustable foam seal for PYROLINE® Rapid PLM installation duct to seal cable bundles or cables with a large external diameter for cable exits from the installation duct. The surface must be additionally sealed with the ASX ablation coating.

Dimensions



St FS

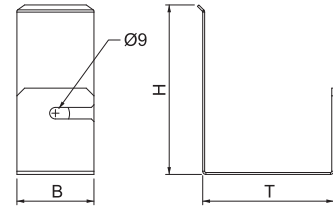
Pressure clip for wall mounting, duct height 120 mm

Type	Dim. B mm	Dim. H mm	Dim. T mm	Dim. quantity Piece	Min. ordering quantity	Item no.
PLM WB 1220 FS	60	132	102	10		7218156



Installation aid against cables falling out during wall mounting of the PLM D 1220 installation duct.

Dimensions



St FS

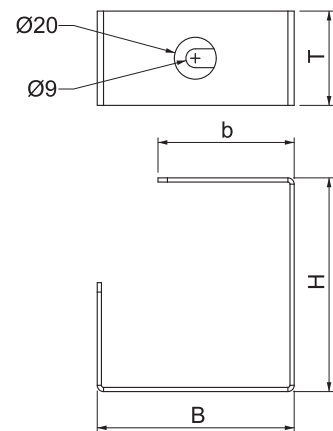
Pressure clip for ceiling mounting, duct height 120 mm

Type	Dim. B mm	Dim. H mm	Dim. T mm	Dim. b mm	Dim. quantity Piece	Min. ordering quantity	Item no.
PLM CB 1220 FS	94	102	45	65	10		7218150



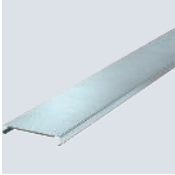
Installation aid against cables falling out during ceiling mounting of the PLM D 1220 installation duct.

Dimensions



Installation duct cover, duct width 100 mm

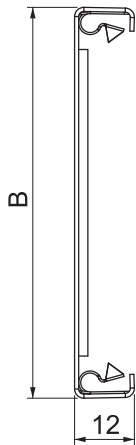
St FS P



Type	Colour	Dim. B mm	Min. ordering quantity m	Item no.
PLM LI 100 FS	zinc	76	2	7218020
PLM LI 100 RW	Pure white	76	2	7218022

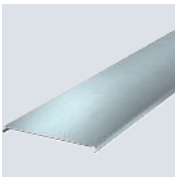
Cover with factory-made beading for toolless mounting and continuous equipotential bonding. Additional locking brackets can be used for shortened covers. Take the details from the mounting instructions into account.

Dimensions



Installation duct cover, duct width 200 mm

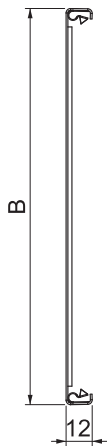
St FS P



Type	Colour	Dim. B mm	Min. ordering quantity m	Item no.
PLM LI 200 FS	zinc	176	2	7218024
PLM LI 200 RW	Pure white	176	2	7218026

Cover with factory-made beading for toolless mounting and continuous equipotential bonding. Additional locking brackets can be used for shortened covers. Take the details from the mounting instructions into account.

Dimensions



St FS

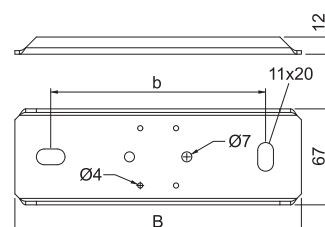
Support, duct width 100 mm

Type	Colour	Dim. B mm	Dim. b mm	Min. ordering quantity Piece	Item no.
PLM SU 100 FS	zinc	200	150	1	7218164
PLM SU 100 RW	Pure white	200	150	1	7218166



Support for suspended mounting of the PYROLINE® Rapid PLM installation duct.
Suspension point for accepting two M10 threaded rods and suitable as a support at joints of ducts and fittings.

Dimensions



St FS

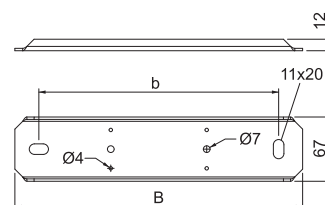
Support, duct width 200 mm

Type	Colour	Dim. B mm	Dim. b mm	Min. ordering quantity Piece	Item no.
PLM SU 200 FS	zinc	300	250	1	7218168
PLM SU 200 RW	Pure white	300	250	1	7218170



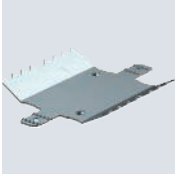
Support for suspended mounting of the PYROLINE® Rapid PLM installation duct.
Suspension point for accepting two M10 threaded rods and suitable as a support at joints of ducts and fittings.

Dimensions



Joint connector, duct height 44 mm

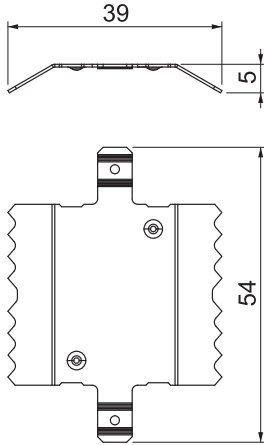
A2 BK



Type	Min. ordering quantity	Item no.
	Piece	
PLM SI 0404	5	7218027

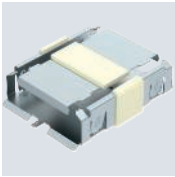
Joint connector for toolless mounting of the PYROLINE® Rapid PLM installation duct. To create a fire-resistant joint connector, the foam seal for a 40 mm duct height must be used in addition.

Dimensions



Joint connector set, duct height 40 mm

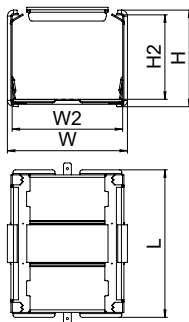
St FS



Type	Dim. H	Dim. H2	Dimension W	Dimension W2	Dim. L	Min. ordering quantity	Item no.
	mm	mm	mm	mm	mm	Piece	
PLM SIC 0410 FS	37	27.5	100	91	126	1	7218029

Joint connector set, consisting of a connector for the duct base and cover support. With integrated seal for toolless connection of the PYROLINE® Rapid PLM installation duct and fittings. Allows continuous connection of the protective conductors.

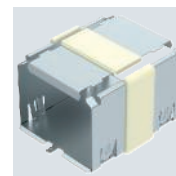
Dimensions



St FS

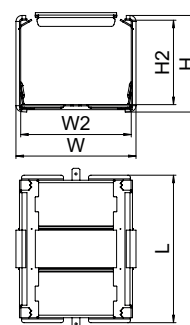
Joint connector set, duct height 80 mm

Type	Dim. H mm	Dim. H2 mm	Dimension W mm	Dimension W2 mm	Dim. L mm	Min. ordering quantity Piece	Item no.
PLM SIC 0810 FS	77	67.5	96	88	118	1	7218031



Joint connector set, consisting of a connector for the duct base and cover support. With integrated seal for toolless connection of the PYROLINE® Rapid PLM installation duct and fittings. Allows continuous connection of the protective conductors.

Dimensions



St FS

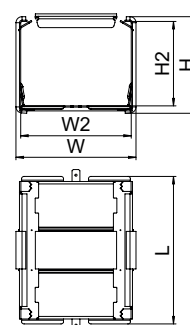
Joint connector set, duct height 120 mm

Type	Dim. H mm	Dim. H2 mm	Dimension W mm	Dimension W2 mm	Dim. L mm	Min. ordering quantity Piece	Item no.
PLM SIC 1220 FS	117	107.5	195	187	118	1	7218033

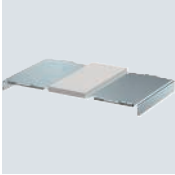


Joint connector set, consisting of a connector for the duct base and cover support. With integrated seal for toolless connection of the PYROLINE® Rapid PLM installation duct and fittings. Allows continuous connection of the protective conductors.

Dimensions



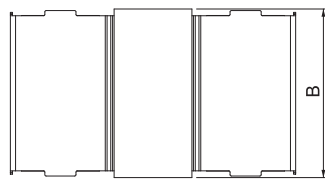
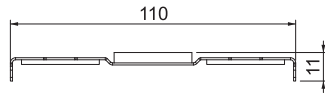
Cover support

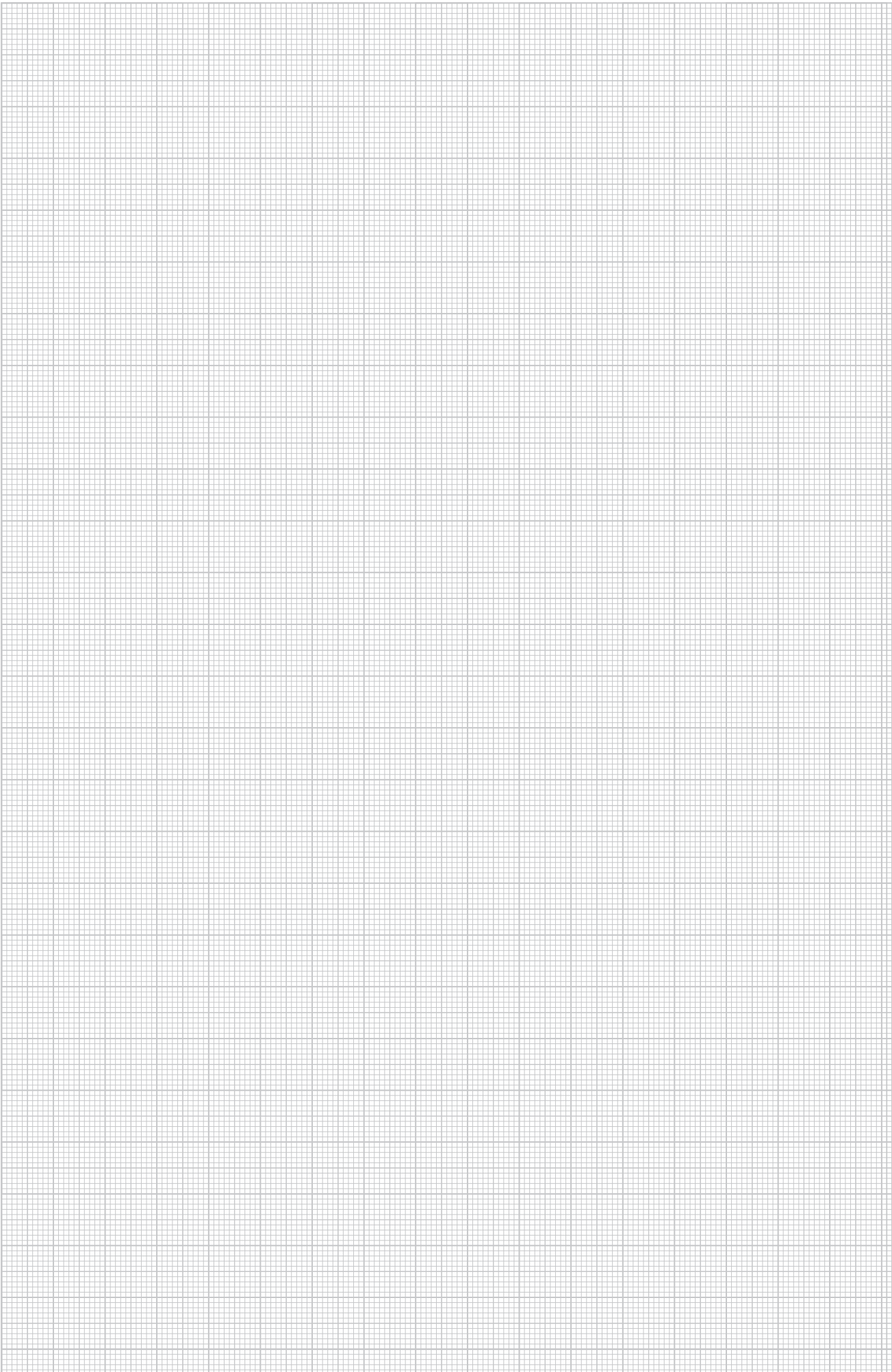


Type	For duct width mm	Dim. B mm	Min. order- ing quan- tity Piece	Item no.
PLM LS 100	100	65	1	7218034
PLM LS 200	200	165	1	7218036

For internal sealing in the area of cover joints and for mechanical cover support in the wall penetration area of the PYROLINE® Rapid PLM.

Dimensions





OBO Bettermann
Vertrieb Deutschland GmbH & Co. KG
Hüingser Ring 52
58710 Menden
GERMANY

Customer Service
Tel.:+49 (0)2373 89-1700
export@obo.de

www.obo-bettermann.com

Building Connections

